



## P936

Compactness and flexibility of installation with choice of rear, side or top flue gas outlet for an appliance offering the pleasurable warmth of a fire even where space is at a premium.

### COLOURS



### GENERAL TECHNICAL CHARACTERISTICS

#### Multifuoco System®

Three speed forced ventilation system. Warm air ducting up to 16 m

#### Multifunction remote control

LCD display, timer, thermostat and Multicomfort function

#### Programming

Daily, weekly and weekend modes. Dual time settings

#### Remote Control System

Optional kit for remote control of stove with a simple SMS

#### Structure

Enamelled steel with door, brazier and firebox in cast iron

#### Majolica cladding

Unique large hand-made pieces

#### Rolling Top

Upper cover plate on sliding tracks to access hopper

#### Air Glass System

Self-cleaning ceramic glass resistant up to 750°C

#### Energy Saving

Quick and easy maintenance, removable ash drawer

#### Wellness

Humidifier with aroma diffuser

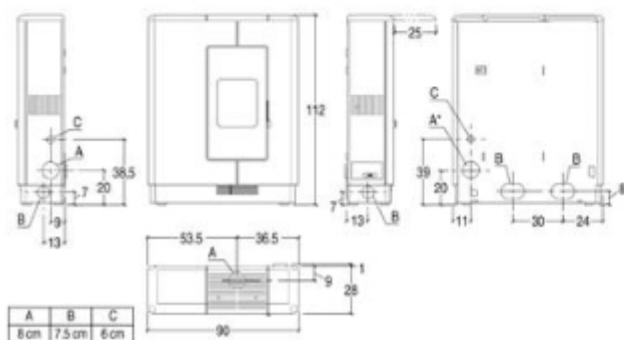
#### Eco function

Automatic power control of the fire

#### Pellet Level Sensor

Allows to monitor the amount of pellet in the hopper, displaying an alert when refilling is required.

### TECHNICAL DRAWING



### TECHNICAL DATA

Room heating capacity (min-max)	m <sup>2</sup>	145 - 245
Rated heat output (min-max)	kW	2,6 - 8,5
Power adjustable (positions)		4
Nominal thermal efficiency	%	85,5
Consumption at rated heat output (min-max)	Kg/h	0,6 - 2,0
Dimensions WxDxH	cm	90x28x112
Cladding/front		majolica
Top		rolling top
Firebox		steel
Baffle plate/Firebox/Brazier		cast iron
Flue outlet Ø	cm	8 - central rear
Flue direction options		top central
Ash drawer		removable
Door		cast iron - steel
Ceramic glass		resistant up to 750°C
Door handle		steel with nickel plated finish
Hopper capacity	Kg	20
Umidifier in stainless steel		yes
Oven in stainless steel (LxWxH)	cm	no
Multifuoco System®		3 levels speed
Dual Power		no
Remote control		display LCD
Stove control panel		with digital control
Timer-thermostat with programming		Daily, weekly and week-end with two times
Remote Control System		optional
Front air vent adjustable		yes
Lateral vents		optional right / left
Minimum power consumption	Watt	100
Maximum power consumption	Watt	370
Total weight	Kg	150

Calculated based on nominal heat output and refers to rooms with a thermal requirement between 0.060 and 0.035 kW per m<sup>2</sup>.

The availability of models may vary from Country to Country.

Copyright c 2010. Tutti i diritti sulle immagini ed i testi sono riservati. Sono vietate la riproduzione e diffusione, anche parziale, in qualsiasi forma, delle fotografie e dei testi. I trasgressori saranno perseguiti a norma di legge. Tutti i prodotti illustrati costituiscono creazione di proprietà della società Gruppo Piazzetta SpA. Ogni diritto di sfruttamento dei modelli è riservato. Il marchio ed i segni distintivi della società sono di proprietà esclusiva della stessa.

Poichè l'azienda è costantemente impegnata nel continuo perfezionamento di tutta la sua produzione, le caratteristiche estetiche e dimensionali, i dati tecnici e gli accessori possono essere soggetti a variazione.

Numero Verde  
**800-842026**  
[www.piazzetta.it](http://www.piazzetta.it)

