



MP 973 TH

GENERAL TECHNICAL CHARACTERISTICS

Structure: enamelled steel frame with closed firebox
 Firebox: In steel and Alukey®
 Boiler: In thick steel structure
 Closed expansion tank: standard
 Circulation pump and safety devices: standard
 Brazier: In steel
 Opening: cast iron door, gasket with metal sheath, self-cleaning ceramic glass resistant up to 750°C
 Door handle: hide away and detachable
 Functions: LCD remote control and Multicomfort settings, additional control unit
 Cronothermo: standard, allows split times for daily, weekly and weekend programs
 Flue outlet: rear
 Ash pan: removable
 Fuel: pellet
 Heating: water heat exchanger

TECHNICAL DATA

Rated heat output (min-max)	KW	9 - 30,3
Heat output to the water (min-max)	KW	7,5 - 26,4
Power adjustable (positions)		5
Nominal thermal efficiency (min-max)	%	> 90
Consumption at rated heat output (min-max)	Kg/h	2,0 - 6,80
Dimensions WxDxH	cm	95 x 59,5 x 137
Cladding/front		
Top		
Stove		
Baffle plate		Alukey®
Firebox		Steel and Alukey®
Brazier		Steel
Flue outlet Ø	cm	10
Boiler		Thick steel 45,0 l volume
Circulation pump and safeties		standard
Expansion tank		standard
Sanitary hot water kit		
Ash drawer		removable
Door		
Ceramic glass		resistant up to 750°
Door handle		hide away and detachable
Hopper capacity		65
Stove control panel		
Timer-thermostat with programming		Daily, weekly and weekend modes. Dual time settings
Minimum power consumption	Watt	180
Maximum power consumption	Watt	460
Total weight	Kg	275

ON REQUEST

- Plaster board door

Laboratory data using beech pellet with calorific value of 5 kWh/kg. Consumptions may vary according to the dimensions and the type of pellets used

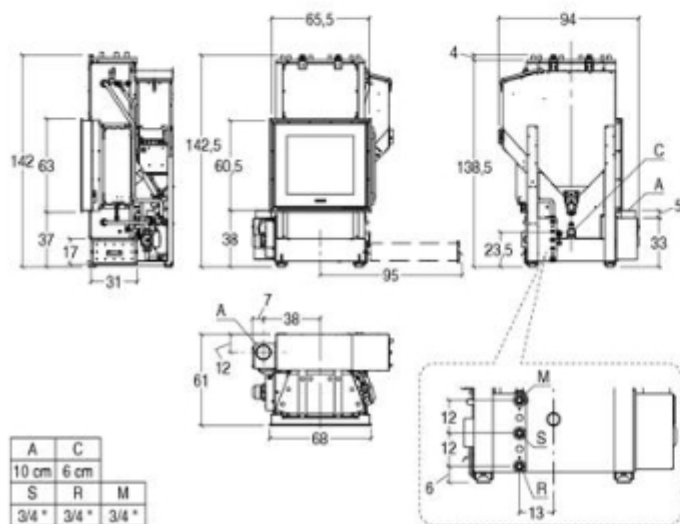


The availability of models may vary from Country to Country.

Full technical data available in pdf



TECHNICAL DRAWING





DoP product



DoP product



DoP Metal Connecting Flue Pipes



DoP Metal Connecting Flue Pipes

Compatible Cover

ESSEN - VIENNA - BARCELONA - COLONIA - EASY - MALIBU